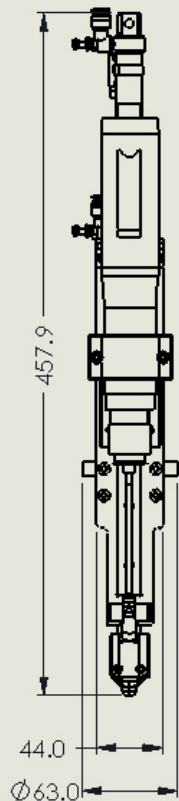
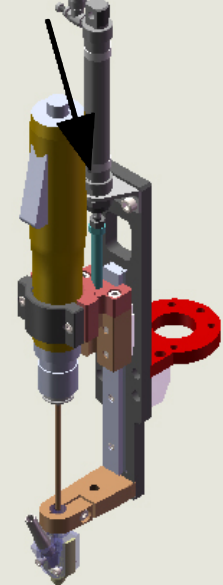
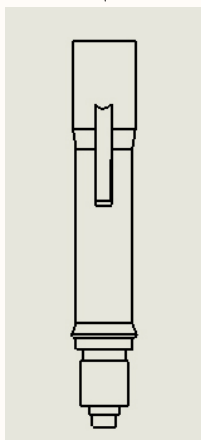


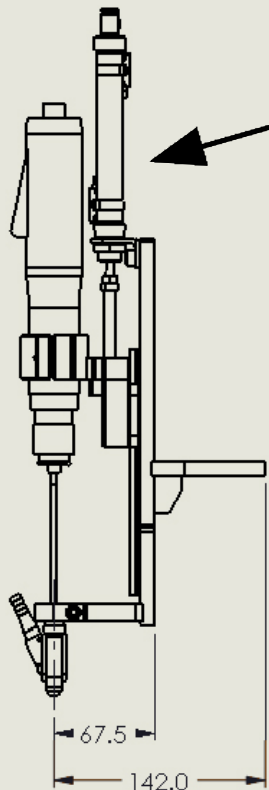
电批



电批

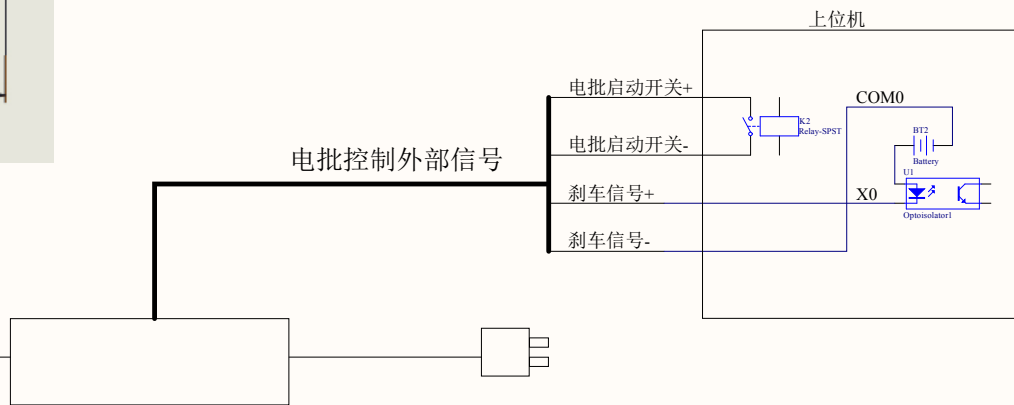


打螺丝气缸



### 控制流程

1. 螺丝供料机送料
2. 送料完成，定位到螺丝孔位（螺丝头接触螺丝孔）
3. 电批启动，
4. 打螺丝气缸动作，下压
5. 收到电批扭力信号
6. 上升打螺丝气缸
7. 打螺丝模组离开螺丝孔



### 机器人打螺丝模组

Title		
Size	Number	Revision
A2		
Date:	2019/3/10	Sheet of
File: F:\13\机器人自动化\机器人控制\机器人打螺丝模组		1